

AMERICAN ARACHNOLOGY

The Newsletter of the American Arachnological Society

NUMBER 65

April 2002

What's Inside

2002 A.A.S. Meeting, Riverside CA.... 1
 Registration forms 5 & 6
 Call For Papers..... 7
 Student Paper Guidelines 8
 Arachno - Auction 9
 Treasurer's Report 10
 Map of Los Angeles-Riverside area ...11

26th Annual Meeting of the American Arachnological Society

Riverside, California
25-29 June, 2002

Hosted by
University of California, Riverside
and Rick Vetter

--Dates & Deadlines--

- **25-29 June, 2002, Riverside, California**
- 21 April- last day to register and be eligible for the early bird raffle
- 15 May- deadline to register for meeting and ordering spiffy golf shirts, tank tops and baseball caps; late registrants cannot be guaranteed a talk or poster after May 15th
- 1 June- deadline for receipt of payment to avoid late fees and finger-wagging
- **24-28 July, 2003, Denver Museum of Nature & Science**
- **2004 Norman, Oklahoma**
- **2005 Hiram, Ohio**

All this information is available at:

www.americanarachnology.org

Getting to UC Riverside Airports

The best airport to fly into is Ontario, about 25 miles from Riverside. It is served by the following airlines (American, Alaska, Delta, Northwest, Southwest, TWA, United) and a few others I can't remember off the top of my head. It has easy access to freeways and on the outskirts of ugly Los Angeles gridlock. However, realize that virtually all LA freeways become parking lots at some point, especially between 3 and 7 pm on weekdays. If you have to fly into LAX, please try to arrive as early in the day as possible otherwise you will be spending many more hours on the freeway than humanly and humanely civil and may be trying to find the campus in the dark. Avoid LAX if at all possible as the 70 mile trip could easily take you 3 hours if you hit the wrong traffic situation and that does not include accidents, freeway construction, or televised helicopter chases. If you do choose LAX, I would severely recommend that you arrive at the airport before 1pm. The LA Freeway system can be confusing however, one ameliorating fact is that Riverside is a major city and often the signs, in addition to pointing you east/west, north/south will give you the choice of something like "LA or Riverside" once you get close. There are shuttle services from the airport. However, in general, plan to arrive as early in the day as you possibly can because after 2pm, the freeways start to clog up as you head east to Riverside. San Diego is about 110 miles, and once you get out of San Diego proper, the road is a straight shot north through bucolic avocado orchards without traffic, so it will actually be quicker, more pleasant and you will arrive with nerves intact.

Directions

You should check general maps for LA freeways as it will be very confusing. Road and campus maps will be posted on the AAS website.

From Ontario Airport, in your rental car, get on Airport Dr and turn right (east) - (the mountains, if you can see them, will be to the north). In a few short yards, you will get to Haven, turn right (south). Continue south on Haven for a few miles, get in the left hand lane and then turn east (left) on to the 60 freeway. This will bring you straight to campus. As you approach Riverside, DO NOT turn south on the 91 freeway even though the sign says "Riverside". You want to stay on the 60/215 freeway toward "Indio". Just past the 91 freeway, turnoff on the left, you should see the Box Springs Mountains (they have a large concrete "C" for

AMERICAN ARACHNOLOGY

is the official newsletter of the American Arachnological Society, and is distributed biannually to members of the Society. Items for the Newsletter should be sent to the Editor, Alan B. Cady, Dept. Zoology, Miami Univ.-Middletown, 4200 E. Univ. Blvd., Middletown, Ohio, 45042, USA, (513/727-3258, FAX: 513/727-3450; E-mail: CADYAB@MUOHIO.EDU). Deadline for receipt of material for the Fall issue (Vol. 66) is 15 September, 2002. All correspondence concerning changes of address and information on membership in the American Arachnological Society should be addressed to the Membership Secretary, Norman I. Platnick, American Museum of Natural History, Central Park West at 79th St., New York, N.Y., 10024 U.S.A., (FAX: 212/769-5277). Members of the Society also receive the JOURNAL OF ARACHNOLOGY, published triannually.

California on them) behind campus. Once in Riverside, take the University offramp, turn left (go under the Mural Bridge) toward the verdant campus and the mountain behind campus (if you can see it through the smog) Turning right (the wrong way) puts you down Restaurant Row (Starbuck's et al.); it should be obvious which is the correct direction. Turn right at the second stoplight (at the ugly Fine Arts building) on to West Campus Dr. and stop at the parking services kiosk 50 yards ahead. On Tuesday, the 25th the kiosk will be open from 7 am to midnight, otherwise it is open till 6pm. This will be the only place for you to obtain the weeklong parking permit (\$16). If you are attending only one or two days, then get the daily pass (\$6 each day). Then ask for directions to parking lot 22 and Pentland Hills dormitory and/or check the map. DO NOT park on campus without your permit (i.e., DO NOT check into the dorms first and then figure on getting the permit. The dorm lots, and campus in general, are patrolled heavily due to lots of student violators. You WILL get ticketed.)

Alternatively, from Ontario airport, LA or elsewhere, you can take the 10 freeway east and turn south on to the 215 freeway in San Bernardino but realize that you need to turn east on the 60 (toward Indio not Los Angeles) in Riverside to get to campus. If you don't make a turn, the freeway name changes while you drive straight and you will be on the 91 freeway heading to the beach which may be a much nicer time but you'll miss the meeting. (There are many Riverside roads that change names without you making a turn or that break with a gap between roads of the same name which is very confusing and frustrating for newcomers. Be aware.)

From LAX, via con Dios. Take the 105 freeway to the 605 freeway north to the 60 freeway heading east. Follow the directions listed above for the Ontario airport once you get on the 60 freeway and are approaching Riverside. Please check internet map directions for how to get from LAX to the 105 (only a few blocks and there should be signs but I never go to LAX so I am unfamiliar with the route right around the airport).

From San Diego, consult maps to get you out of the city and then head north on the 15 then the 215, then near Riverside, take the 60 freeway west (toward Los Angeles not Indio) and get off on University, turn left onto University (you will be turning away from the Mural bridge), turn right at the first light (at the ugly Fine Arts building) and the kiosk will be right there.

Shuttles

There are shuttles from the airports right to the dormitory although the dorms are new so carry campus maps and directions with you to help the driver. If you want to be dropped off right at the dorm door, direct the driver to the back of Lot 15 on the map (labyrinth-ish) or to Lot 22 off of Linden Avenue (much easier), if your driver gets lost.

Inland Express Shuttle Service (1-888-938-4500) www.inlandexpress.com. There is a special \$25 rate from the Ontario Airport to UCR (make sure you mention "U. C. Riverside" and not just "Riverside") and if you can coordinate rides with other attendees, it is \$10 for each additional person on the same van so it might be worthwhile to contact folks. They also handle shuttles from LAX and charge \$55 which is probably a bargain if you hit traffic (and even if you don't) with \$10 extra for each of 3 additional people. If you have 5 to 10 folks, it becomes a private van for the flat rate of \$150.

Super Shuttle Another shuttle service can be found at www.supershuttle.com 909-467-9600 \$30 from Ontario, with \$9 for each additional person and \$62 from LAX with each additional person on the same van being \$9.

If I am not overly overwhelmed in June (HA!!!), possibly I can have people contact me in early June and I can post peoples' names and desires and you can hack it out amongst yourselves.

Dormitory, Parking and Hotels

The Pentland Hills dormitory is less than 3 years old and very nice (and you will pay dearly for it. \$42 a night for single with breakfast, \$39 a night for each double with breakfast) However, for the frugal traveler or those with special dietary needs or wishing to do their own meals, each dorm wing has its own food prep area including full-sized refrigerator, microwave, etc. Meals will also be available in a different dormitory (so you have to walk to eat). But if you can get away with tea and a bagel for breakfast, you can buy some local food and save some bucks which you can then spend at Disneyland. The permit will be good for the parking lots near the

dorm (Lot 22), near the University Theatre where the talks are held (Lot 6 - student section - GOLD parking area with the yellow painted lines only, not the white lines which is for staff) and the banquet building. Please follow all the parking rules and ALWAYS display your parking permit. You might consider driving from the dorms to the theatre so you can get out quickly for lunch. There is some dining within walking distance on campus but there is much more variety and better quality food along University Ave. which is best accessed by vehicle.

Finally, be aware that there is supposedly a strict no-alcohol rule in the dormitories (HA!!!) so for those of you who wish to consume libations in the dorm, you get to relive your exciting youth experience of sneaking alcohol past authority figures. Officially, I cannot advocate the breaking of such regulations so please be discrete and don't tell me anything about it. Also please be discrete when you dispose of the evidence although I'll gladly recycle the containers for you and deny that you gave them to me.

For those eschewing dormitory life, there are several hotels around. Also, considering how expensive the dorms are (and frankly, this shocked and appalled me), you can do better if you double up with someone and stay in a nice hotel as long as you have a rental car to drive to campus. The dorms will offer adequate rooms and will be very safe (if safety is a concern); the hotels could be cheaper but out where non-arachnologists roam. If you are driving your own vehicle, I would stay at the dorms for safety sake but I am a former New York scaredy-cat who always takes the safest path (yet I work with widows and recluses, go figure). My personal hotel choice would be Courtyard by Marriott. The Dynasty Suites are suites with full-sized fridges, microwave etc. and other amenities if you want to save money on meals. The Mission Inn is a historic, famous and very quirky landmark hotel in Riverside, a major attraction. Make sure you ask for the UCR conference rate, cost listed is the daily rate. I would not recommend hotels not listed here that you might find listed for Riverside (i.e., Motel 6) as they are not in the most desirable areas (i.e., behind fast food joints or gas stations) and might invite undesirable non-arachnologists. All are 909 area code, mileage is distance to UCR and internal/external refers to corridors.

Dynasty Suites 369-8200 3735 Iowa Ave (0.5 miles) \$65-70 external, only 36 units

Comfort Inn 683-6000 1590 University Ave (0.8 miles) \$55 external

Courtyard by Marriott 276-1200 1510 University Ave (0.8 miles) \$69 internal

Mission Inn 784-0300 3649 Mission Inn Ave. (2.7 miles) \$84-99 intl & extnl

Holiday Inn 784-8000 3400 Market (3.0 miles) \$75 internal

Hunter/Gathering in Riverside

There is an eclectic bit of restauranting available near campus. On campus, there is student faire at the Commons and The Barn serves very good lunch faire. Of course we have Starbuck's on campus as well as Krispy Kreme donuts. (Be aware that there are lots of high school student programs going on during the summer so get in for food before noon or else the lines are horrid). University Village, just on the other side of the freeway from campus (about a 10-15 minute walk) contains a raft of student-oriented quick food places (Quizno's - subs, Rubio's - fish-based Mexican, Boomba's - sitdown Italian, others of Asian or Indian ethnics). Parking there however, remains miserable - the "planners" keep adding buildings at the expense of parking spaces (can you say, "DUH"?). Further along University Ave are the requisite nationally recognizable fast food joints. A very good Indian restaurant (Bombay Kitchen) is a personal favorite although it is somewhat pricey for dinner - they do an excellent buffet style luncheon which is inexpensive, tasty, quick and very popular. Don Pedro's (Mexican food) is pretty good and somewhere between franchise and authentic. Further from campus there is Ciao Bella (upscale Italian). Zacateca's serves traditional Mexican food (molé) but is open for lunch only as it is in the seedier part of town. You might also want to familiarize yourself with the Canyon Crest Towne Center, 2 miles south of campus, in the hoity-toity section of Riverside. Extremely safe for all kinds of nocturnal activities such as restaurants, a very upscale supermarket, a 24-hour drug store. If you really like sushi, I can give you directions to a great sushi bar which is about 5 miles from campus but don't expect to run in an out in 1 hour. My favorites there are the Spider Roll and the Caterpillar Roll.

Safety in Riverside

I consider Riverside fairly safe and I have never had any problems in the 22 years I have lived here. However, it is an urban southern California city, it does have its pockets of nefarious non-arachnologists and the economic gradient falls off very quickly as one travels away from campus on University Avenue. Please exercise the normal caution you would display in urban cities. This is not Keene, New Hampshire nor Dickinson, North Dakota. Exerting some urban sensibilities will minimize the chances that your Riverside stay will be tarnished.

Early Registration and Incentive to do so

As many of you know, because I am staff at UCR and not faculty, I am running into some obstacles because I can't throw my weight around. Therefore, I am starting the registration much earlier and setting an earlier deadline because I probably will be doing much of the clerical set-up of the program, abstracts assembly and nametags myself. Therefore, if you wish to help out me and the society, please register as soon as you can once the April 1st opening date comes through, especially for those of you who are giving talks. As an incentive, all those who register between April 1st and April 21st, will be eligible for a raffle (your choice) for either 1) one free fancy conference golf shirt (see below) or 2) the "taxonomy drawing". For the latter, I will give away 5 packets (each containing 6 spiders) for the taxonomically-interested who want to add some strange, mostly western material to their collections. Each spider packet will consist of a specimen of a brown recluse, a hobo spider, a male black widow, *Zanomys californica* (Amaurobiidae), *Neonagraphis chamberlini* (Lioecranidae) and a limited choice of *Aphonopelma* (Theraphosidae), *Orthonops* (Caponiidae), *Olios fasciculatus* (Sparassidae), *Scaphiella hespera* (Oonopidae) or whatever weird stuff I can come across before June. Late registrants will be forced to take specimens of *Pholcus phalangioides*, *Achaearanea tepidariorum*, *Steatoda triangulosa*, and lots of immature lycosids, linyphiids, and salticids that I am trying to unload. That should put fear into your arachnological hearts.

Shirts

The logo for the meeting will be an *Aphonopelma* tarantula. I am planning to have a 3" inch tarantula with AAS 2002 underneath embroidered on the left pectoral of shirts. At anytime, there will be crew neck t-shirts (for \$14, XXL are \$16) like always. However, in registration before May 15th only, I am offering the same logo with high-class golf shirts (\$24, XXL are \$26), lesser-class tank tops (\$14) and baseball caps (\$12 with just the tarantula but probably not AAS 2002). Once the registration deadline passes, I will order as many of the golf shirts, tank tops and caps as are paid for (with a few possibly being left over at the meeting if I have to fill out the order to even dozens) and that will be it. At the meeting itself, there will only be the usual crew neck T-shirt. All shirts and hats will be tan in color with brown threaded embroidery.

Mini-symposium, Talks and Posters

On the first day of talks, there is going to be a mini-symposium on "Arachnids of Medical Importance". The speakers include two medical university physicians and topics will include bite/sting symptoms, phylogenetics, distribution, diagnoses and misdiagnoses of bites. The speakers and tentative subjects are:

Sean Bush, MD: Aspects of black widow envenomation
Leslie Boyer, MD: Aspects of scorpion envenomation
Greta Binford: Phylogenetic aspects of *Loxosceles* venom
Robb Bennett: Hyperbole and hysteria along the path to enlightenment: The hobo spider (*Teegenaria agrestis*) in North America
Rick Vetter: The myth of the brown recluse spider: myth-takes, myth-identifications and myth-diagnoses

Because this is southern California and many folks may be drawn here for the tourist activities, I am anticipating a good turnout for the conference. Therefore, in order to ensure that you get the talk or poster you wish, please register early. I will not be able to schedule concurrent sessions without incurring a great cost, without having to deal with more university bureaucracy (which is giving me better understanding about violence in the workplace) and the meeting is going to be more expensive than normal anyway due to it being a southern California venue. If all the talk slots are taken, you may be asked to present as a poster.

Also, for the morning speakers, I am asking that you make sure that your talk (including the questions) only takes up about 14 minutes and does not extend past the 15 minute mark. This will give

about a minute to introduce the speaker, get the cordless microphone set up, deal with Powerpoint screwups, etc. We need to adjourn the morning session sufficiently early because there are many summer programs on campus with hundreds of high schoolers being released contemporaneously right before noon. Late adjournment can easily mean standing in a line for 30 minutes to order food surrounded by hundreds of neo-pubescent in baggie pants and blue, spiked hair. Dude!!! Not my idea of a good time. It's your choice.

Poster size: Maximum poster size: 4 foot vertical by 3 foot horizontal.

Powerpoint presentations: Projection equipment for graphics. Of course, there will be a Carousel slide projector for those of you (including me) who prefer the high resolution and highly reliable 35mm slide format. We have a fair number of slide carousels available if you need to borrow one. Those using Powerpoint or other presentation software have two options:

1) Bring your own laptop. We will have a hookup with an AB switch, so you can connect via a VGA cable, and we can switch to your input when your talk begins. This has the advantage that you can get your presentation working on your own system, has less limit on file size (as long as your system performs OK with massive files...), and is the only option for other than Powerpoint software. It has the disadvantage of having to lug the laptop.

2) Bring your presentation on a 100MB Zip disk, and have it ready to go by the first day of the meeting. We will have a computer (certainly a Mac, probably both a Mac and PC) onto which you can load and check your presentation in advance of the session. If you use this option, try to limit your file size to less than 10 MB. Helvetica font has fewer inter-platform issues than some others. If access to a Zip disk is a problem, we can probably work something else out, but not at the last minute. Whether using your own laptop or ours, remember that the resolution of the presentation will be determined by the projector. We will have at least 800 x 600 resolution, maybe better, but don't count on better (i.e. preview at 800 to be sure your presentation will look OK).

Wednesday Night Dinner

As an attempt to maximize arachnological mingling, on Wednesday night, there will be a dinner at the Barn on campus. The meal will be a Texas BBQ with all the fixin's. This facility is usually closed at night so we will have the run of the place. It has indoor and outdoor seating. The meals will be part of the registration fees. Soft drinks are included and you will be able to purchase beer if you so desire (and we know you will).

Sponsors

Once again, the Riverside meeting is going to be more costly because UCR is not giving me breaks such as a free meeting hall like most hosts get and some of the campus services have a no-competition, airport vendor mentality. Therefore, I have attempted to reduce registrations fees by getting some sponsor money and donations of food items, which is uncommon at AAS meetings. Bioquip, suppliers of all things entomological, is offering us \$200 for the meeting and will be putting up a table in the lobby of the theatre on Wednesday, the 26th. For the arachnologist, they have vials including genitalia vials, nets, many arachnid books, etc., that should be of interest. Please check out their website prior to coming to the meeting and if you want things, they can probably bring them along for you or get them to UCR before you leave.

Auction material

I have received some material from the library of Bill Peck. Of greatest interest is Eleazar Albin's 1736 book A Natural History of Spiders which is in exquisite condition, Spiders of Japan in Color by Yaginuma and several original Petrunkevich reprints including the Amber Spiders.

Conference Field trips

During the meeting there will be two contemporaneous field trips on Saturday; a fee will be charged for each to offset cost of transportation, lunch and beverages. Participants will be limited by bus occupancy.

The Desert/Mountain Trip will include a morning jaunt out to the Oasis de los Osos (Oasis of the Bear - no doubt a place previously inhabited by ursines until they were blasted to extinction for the "good" of mankind and the detriment of bearkind). Located on the northern side of the San Jacinto Mts, this UCR reserve will allow one to see a smidge of desert habitat for morning collecting. It has a perennial waterfall and riparian area so arachnids

should be available. Pitfalls may also be installed just for the meeting. Remember this will be summer, temperatures should easily be 100° or more so dress for severely hot weather (thin long sleeve shirt, large brimmed hat, sunscreen and bandanas to dip in ice water and wrap around your neck and forehead). Survivors from the morning will be whisked away for lunch and afternoon collecting in the nearby San Jacinto Mts, at the James Reserve (5800 ft), pine-oak forest. This is another Univ. Calif. reserve and is equipped with a building that includes a full kitchen, running water, flush toilets (we will have to clean the facilities before leaving as there are no janitorial services). It will be a lovely place to cool your heels, fill your belly and then go out and collect some montane spiders in the shade and temperatures of maybe 80 degrees. They have multiple lines of pitfall traps which I will request be opened a few days before we get there. Exciting spiders here include *Megahexura* (Mecicobothriidae), *Plectreurys* (Plectreuridae), the largest known *Collobius* (*C. guachama*) and the boring *Neriene litigiosa* (Linyphiidae). Leaf litter samples have yielded *Zanomys* (Amaurobiidae) and *Zora* (Zoridae). There are also scorpions of unknown species.

Those of you wishing to shun the sun of the life-threatening desert:

The Coast Trip is being organized by society anarchist and archivist, Lenny Vincent and will include an all day trip to Laguna Beach Parks. However, Laguna Beach is a beach resort town with lots of restaurants and art galleries (including famous massive whale muralist Wyland), that we are offering to take folks down to the beach if they wish to spend the day touring, lunching and ogling the tan bodies on the sand. Trip will be \$20 for those collecting (lunch included) or \$15 for those who wish to be tourists (you get your own lunch in Laguna). At the moment, only one bus is reserved (holds 46). If we get sufficient interest in the Laguna trip such that we can afford to hire a second bus, we will do so.

Cancellation Policy

If you need to cancel after you have already registered, a refund will be issued for whatever costs have not been incurred on your registration. However, please realize that the closer it gets to the meeting that some expenses on photocopying and foods are incurred so that a portion of your fees cannot be refunded.

The City

Riverside is a humble little burg of 240,000 people, one of the larger cities that make up the sprawling quilt that is urban Southern California. Its history is richly rooted in the citrus industry; the first navel oranges grown in the U.S. were started here. One can still find stands of citrus trees that have yet to be bulldozed under to make way for the suppurate human population that continues to grow like an unchecked bacterial infection. The city is a mixture of urbane and not-so-urbane urbanization as well as land used for agricultural and recreational horse activity. One of the city's major tourist attractions is the Mission Inn, a quirky quixotic hotel, built in the style of the old Spanish missions by someone whose architectural whims were influenced by his travels, hence explaining several Japanese pagodas, gargoyles and a shrine to WWII pilots amongst the otherwise erstwhile Spanish decor. Riverside is located about 60 miles east of Los Angeles and is known as the place to stop to use the restroom on the way to Palm Springs. It is also 90 miles north of San Diego and a jump off spot to the deserts and mountains.

UC Riverside

The Riverside campus started out as the Citrus Experiment Station in 1908 and became a university in 1950's. For many years it has languished as an ugly agricultural little sister of the 9-campus Univ. Calif. system, overshadowed by the more prestigious and better known campuses (UCLA, Berkeley, Irvine, San Diego). Recently it has undergone tremendous growth in student population and has been making amazing leaps and bounds in academic stature in a variety of disciplines with several nationally single-digit-ranked departments. In the life sciences, there is still a strong agricultural emphasis; Entomology is the largest department on campus housing 40 professors. Other separate life science departments include Botany, Plant Pathology, Nematology, Neurobiology and Biology. Current student enrollment hovers around 14,000 and the campus has been undergoing numerous additions of buildings and their concomitant annoying and disruptive construction on campus.

Weather

Leave the umbrella at home. Southern California is a Mediterranean climate which means it only rains in winter, except for a rare

freak tropical condition (like right now - July 4th - as I am typing this paragraph). Temperatures will more than likely be in the range of 90-100 degrees. If we are lucky, we might have an early morning marine layer which would start the day chilly (bring a sweatshirt, in case) and keep daily highs to mid-80s. However, any time between April and October it can be 105° but that is rare for late June. Evenings are usually tolerable once the sun sets. We are typically 10°+ hotter than the reported Los Angeles temperature. Check www.weather.com for a forecast before traveling.

Smog is a southern California entity, however, air quality continues to improve despite the addition of more motorists. Smog blows in from LA in the afternoon and dissipates when the sun goes down. It has been several years since we have had 2nd stage alerts meaning that outdoor activity should be curtailed (no joke). If you plan to run or do other exercise, it is best to do so in the early morning or late evening.

Other Southern California Attractions

Of course, southern California is home to theme parks of international acclaim. Despite its high cost (\$40+ per adult per day) Disneyland still offers the biggest bang for the buck and they now have the California Adventure which is supposed to be hot puppies and with very long lines. Universal Studios is also popular and likewise, expensive. For those who like death-challenging roller coasters, Magic Mountain offers emesis-inducing mesentery checks. Norton Simon Museum, the Queen Mary, the La Brea Tar Pits, celebrity freeway chases, etc. are amongst the many tourist attractions here. San Diego is also within a 2 hour drive, home to Sea World (Shamu et al.) and the famous Zoo. However, I find the incarceration aspect of zoos depressing and much rather prefer the San Diego Wild Animal Park in Escondido (closer to Riverside and rather warm) where large African animals roam over hundreds of acres and procreate like they are getting paid to do so. Within a 1 to 2 hour drive is also Palm Springs where temperatures will be in the teens (that's 110+ degrees), the cooling mountains, the high desert.

Other lesser-known attractions:

Banana Museum - Altadena; **Lone Ranger Museum** - Downey; **Roy Rogers Museum** - Victorville; **Foot and Toe Museum** - Long Beach; **Bunny Museum** - Pasadena; **Bigfoot/UFO Museum** - Malibu

Consult a tourist guide and check with local agencies such as AAA as there are discounts available that can save you significant amounts of money on admission to these places. In planning your excursions, please check temperatures before venturing out because they will vary from 75° C at the coast to 115°+ C in the deserts.

Collecting on Campus

For those who wish to collect on campus, there are plentiful opportunities. On the south edge of campus (the highest elevation portion of perimeter road encircling the campus) are old agricultural buildings, crops and greenhouses which should readily yield black widows at night and other stuff during the day. There are also the Botanical Gardens, just across Parking lot 13 from the Lothian dormitory which has multiple gardens, a stream and other varied habitats. The Agricultural Operations bordering either side of Martin Luther King Blvd just off campus has their gates open from 7am to 5pm (leave by 4:30 or you may be stuck there all night) and you are free to sample a variety of agricultural habitats including citrus, eucalyptus, avocado. However, do not pick, eat or knock off any of the fruits/veggies because they may be a crucial part of someone's research or possibly could be sprayed with an experimental chemical of unknown toxicity. Exciting spiders to be found are black widows, green lynx spiders, *Metaltella* (Amphinectidae), *Varacosa gosiuta* (Lycosidae) and possibly bolas spiders in the citrus. Please collect every @%#!#@! *Holocnemus* (Pholcidae) on campus; they are everywhere and I consider them cockroaches with 8 legs (no apologies, Beth). Most employees on campus will be accustomed to strange people with vials, kneeling down to scrutinize bushes and sidewalks, however, I will alert the police that there may be nocturnal, headlamped folks trolling the nether regions of campus for arachnids.

26th MEETING OF THE AMERICAN ARACHNOLOGICAL SOCIETY
University of California-Riverside
Riverside, CA
June 25-29, 2002

This form could be used, or you may register online at

http://www.americanarachnology.org/AAS_2002/AAS_meetings.html

Registration and abstract submission through the website is preferred !

**** Please note that after registering via the website, payment must be sent (via regular post) before 1 June or suffer late fees AND stern finger-wagging. ****

Personal Information

Last Name: _____ First Name: _____

Affiliation: _____

Address: _____

City: _____ State/Province: _____

Country: _____ Zip code/country code: _____

e-mail: _____ Phone & FAX: _____

Registration Fees

_____ AAS Member (\$75)

_____ Non-Member (\$90)

_____ Student (\$55; same for Member or Non-member)

_____ Non-participant guest (\$35) **(Pay this fee if your guest plans to partake in the Wednesday dinner and snacks for breaks between talks, but will not be attending the sessions.)**

Name(s) of guest: _____

_____ Procrastinator's Tax (add \$15 if you register after 15 May or if you register early but are sending payment after 1 June)

Events

Informal Dinner, Wednesday night, Texas BBQ dinner with all the fixin's. Cash bar. Please indicate whether you plan to attend the event so there is a headcount estimate. There is no additional fee for this event.

_____ I will be there I will be bringing non-participant guests _____ how many?

_____ No, I have other plans, but thanks for asking.

Banquet and Auction

_____ University Extension Bldg., Friday evening (\$25; Students, \$20)

Field trips (you can only pick one)

_____ Field trip to the Desert/Mountains for collecting, Saturday, 8 am -5 pm (\$20 – includes bus ride and box lunch)

_____ Field trip to Laguna Beach Wildlife area for collecting, Saturday, 8 am -5 pm (\$20 – includes bus ride and box lunch)

_____ Field trip to Laguna Beach for shopping, touring, beaching, ogling. Saturday, 8 am -5 pm (\$15 –bus ride only and self-foraging amongst the plethora of eateries)

_____ If you are going on the collecting aspect of a trip (not the touring at Laguna, i.e., you are paying \$20 not \$15), check here if you wish to have a vegetarian sandwich prepared for you

****Note the Laguna Beach trip will be limited to 46 participants unless there is overwhelming desire such that we can afford to hire a second bus. A waiting list will be assembled if needed. The desert trip may also have a limit to participants.**

Shirts and Baseball Caps

The logo for the meeting is going to be an *Aphonopelma* tarantula embroidered on tan background with AAS 2002 underneath, a guaranteed classic for years to come. As an extra bonus, prior to the May 15th registration deadline, you may order fancy golf shirts (i.e., lapels, buttons, WOW!), regular crew neck t-shirts, tank tops or baseball caps. After May 15th and at the meeting, only crew neck t-shirts will be available. XXL is available for \$2 more each.

Up to the May 15th registration deadline:

Number of fancy golf shirts (\$24 ea.): _____ M _____ L _____ XL _____ XXL (add \$2)

Number of tank tops (\$14 ea) _____ M _____ L _____ XL _____ XXL (add \$2)

Number of baseball caps (\$12 ea) _____ one size fits all (so they say)

Any time during registration and available at the meeting:

Number of crewneck t-shirts (\$14 ea) _____ M _____ L _____ XL _____ XXL (add \$2)

Group photo: (\$10 ea)

I would like _____ 1 _____ 2 _____ 3 _____ 4 (you gotta be kidding!!)

Housing Information

_____ Will be staying off-campus

(please circle your choice - price is person per night; please indicate if roommate will be a non-participant at the meeting and don't forget to calculate that into the total)

	<u>Single</u>	<u>Double</u>
Dormitory, no meals	\$40	\$37
Dormitory, breakfast only	\$42	\$39
Dormitory, 3 meals	\$50	\$47

Person you prefer as a roommate if doing a double: _____

***I was only able to reserve 75 rooms in the dorm. If you wish to secure a dorm room please do not wait to the last minute or else you may be forced to seek housing off-campus.

The official registration and welcome reception are planned for Tuesday, June 25th from 6 to 10pm at the Pentland Hills Dormitory. Please indicate the nights you will be staying at the dorms. The dorms will be open on Monday if anyone wants to arrive one day early for touring (contact me for arrangements)

_____ Tuesday, June 25 _____ Wednesday, June 26 _____ Thursday, June 27
_____ Friday, June 28 _____ Saturday, June 29

Early Bird Registration Raffle

If you are registering on or before April 21st, you are eligible to have your name entered into a raffle for either a free spiffy golf shirt (1 winner) or the taxonomy giveaway (5 winners - see newsletter or website for details)

I am registering on or before April 21st and would like to have my name entered for (choose only one category):

_____ the free spiffy golf shirt _____ taxonomy giveaway
_____ neither, keep the spiders and shirt, because the meeting is more than enough

Payment Totals

Registration: \$ _____ Banquet: \$ _____

T-Shirts/Caps \$ _____ Field Trip: \$ _____

Group Photo: \$ _____ Housing: \$ _____

Procrastinator Tax: \$ _____ (if applicable)

TOTAL ENCLOSED: \$ _____

Please make your check payable to "American Arachnological Society".

Participants from abroad must enclose a cashier's check payable in U.S. dollars

Send Payments to:

Rick Vetter, Entomology, Univ. Calif. Riverside, Riverside, CA 92521

ALL PAYMENTS MUST BE RECEIVED BY 1 JUNE (via regular post) TO AVOID LATE FEES

CALL FOR PAPERS

Abstract Submission

Type of presentation: Talk (15-min) Poster Not presenting
Mode of 15-min talk: Powerpoint 35 mm slides Transparencies
 Sign Language Semiphore Mime w/ Whiteface

Check below if you want to enter the Student Competition (talk or poster):

Student Competition

Note: In order to avoid concurrent sessions, we must restrict each participant to making one presentation. You can be a co-author on more than one talk or poster, but can only be the presenter for one (either talk or poster, but not both). Because it is Southern California, a large turnout is expected.

Circle the category that best indicates the topic of your presentation:

Anatomy/Physiology Behavior Evolution Population Ecology Community Ecology
Systematics/Taxonomy Other

Your Last Name (Presenter): _____ First: _____

Title of presentation: _____

First author's last name: _____ First: _____

Institution: _____

Second author's last name: _____ First: _____

Institution: _____

Third author's last name: _____ First: _____

Institution: _____

Abstracts should be limited to a 250-word maximum. Presentation title, authors' names and affiliations are to be excluded in word count. Do not list your full address. Please prepare your Abstract using the following example as a guide to format (asterisk indicates presenter):

Spiders of the bluegrass: Why are they blue?

James Wagner (Transylvania Univ.), David Wise (Univ. Kentucky) and Juraj Halaj (Univ. Kentucky)

Commisses are read, spiders are blew, if your reeding ahead, my spell check ought two.

Please type your abstract in **11-pt Arial font**. A Rich Text Format (*.rtf) file of your abstract is preferred. It is preferred that you e-mail your abstract as an attached file to Rick Vetter (vetter@citrus.ucr.edu), or submit through the website. Alternatively, you may include this on a 3.5 inch diskette with this registration form.

Please check one of the options: Abstract e-mailed as attachment to vetter@citrus.ucr.edu

3.5" diskette included

Paper copy included (please send a paper copy only if you cannot send a diskette or an e-mail attachment)

Abstracts must be received by 15 May to be included in the program.

DO YOU HAVE SLIDES OR VIDEOS OF ARACHNIDS TO SHARE ON THURSDAY EVENING? It would be very very nice if you could avoid bringing a Powerpoint presentation to the informal session because it will probably be in a room other than the University Theatre where the talks are held and we are going to have to lug all the equipment around. Also, in the unlikely event that the number of talks being scheduled exceed the daytime allocation, we may need to use this time for scientific papers instead.

Slides Video

If regular post is used, please mail registration forms, payment, and abstracts to:
Rick Vetter, Dept. of Entomology, University of California, Riverside, CA 92521

Student Paper Presentation Award Guidelines

I. ELIGIBILITY

A. The student should submit a copy of the paper's abstract to the meeting organizer by the specified deadline (**15 MAY, 2002**). In addition to the abstract, a letter should contain the name of the major professor who supervised the work. The name and mailing address of the Meeting Host is :

Rick Vetter
Department of Entomology
Univ. Calif. Riverside
Riverside, CA 92521 USA
vetter@citrus.ucr.edu
Phone - (909) 787-3550
FAX - (909)-787-3086

B. The presentation either represents independent or joint research in which the student's contribution has been substantial. In case of a co-authored paper the student presenting the paper must be first author.

C. Entry is limited to one standard research paper per meeting (invited symposia presentations and poster presentations are excluded from competition.)

D. Previous winners of the outstanding Student Paper award are not eligible.

II. JUDGES

A. A panel of three judges will be appointed by the President-Elect before the meeting. The abstracts of all student papers and a copy of the judging guidelines will be mailed to each judge prior to the meeting. An appropriate number of evaluation sheets (listing the criteria as below) shall accompany the abstract package for each judge. Judges will be chosen from different disciplines (systematics, morphology, physiology, ecology, behavior).

B. Efforts should be made to avoid bias or conflict of interest in judging, either by appointing judges with no students in the competition or, if that is unavoidable, by having judges abstain from voting on their own students.

C. Judges should meet twice: once before the paper presentation to review the guidelines and once afterward to make a decision on ranking.

D. At least one hour should be available between the last eligible presentation and the scheduled announcement of the award.

III. EVALUATION

A. Judges should give equal weight (expressed in points from 1-10) to each of the criteria listed below. Decisions should be based on the total points earned. In co-authored papers, the judges will carefully evaluate the student's contribution to the presented research. In case of

a tie or very close ranking, the judges may decide on a joint award.

B. Criteria

1. Abstract and paper title:

Organization, clarity, completeness. The abstract should summarize the main results of the research.

2. Scientific merit:

Difficulty and scope of research problem

Approach and design of study

Details of analysis

Creativity of experimental design

Soundness of conclusions

Significance of results

3. Presentation:

Overall organization and clarity, timing of talk

Oral presentation skill, poise

Quality of visual aids

Response to questions

IV. ADDITIONAL PROCEDURES

A. Traditionally, the award is announced at the society's banquet. Students entering the student paper award competition are eligible to buy banquet tickets for a reduced price.

V. AWARDS

The top ranking and runner-up individuals traditionally receive a monetary award. Other awards vary according to donations and other philanthropy.

SAMPLE JUDGING SHEET

Name of Student: _____

Co-authors: _____

Title of Paper: _____

Equal weight (expressed in points from 1-10) should be given to each of the criteria listed below.

Total number of points: 110

1. Abstract and paper title:

_____ organization, clarity, completeness. The abstract should summarize main results of research.

2. Scientific merit

_____ difficulty and scope of research problem

_____ approach and design of study

_____ details of analysis

_____ creativity of experimental design

_____ soundness of conclusion

_____ significance of results

3. Presentation

_____ overall organization and clarity, timing of talk

_____ oral presentation skill, poise

_____ quality of visual aids

_____ response to questions

Points awarded: _____

Total number of points by all three judges: _____

Arachno-Auction or Comb Your Closets

The annual Arachno-Auction which usually takes place at the Annual Meetings has been named the Vince Roth Auction in honor and memoriam of the founder of the auction and greatest contributor for this occasion. This event has produced significant funding for arachnological research, and always provides fun and sometimes exciting suspense when the bidding gets heated over a rare volume.

Once again we are urging everyone to search your storage, sweep-away the cobwebs (be sure they're unoccupied first), and purge your bookshelves to find books, curios, T-shirts, and other objects for bidding at the Roth Auction. If you plan to contribute items, please notify Rick Vetter (meeting host) to enhance coordination of this event. It is good to know that materials you donate will probably go to another arachnophile and benefit arachnological research.

Rick Vetter wishes to announce some particularly interesting auction submissions from the library of the Late Bill Peck. Of greatest interest is Eleazar Albin's 1736 book *A Natural History of Spiders* which is in exquisite condition, *Spiders of Japan in Color* by Yaginuma, and several original Petrunkevich reprints including the Amber Spiders.

AAS Student Paper Award 2001

Winners of the student podium and poster presentation contest were:

First place, Student paper award: **Anya Hawthorn**

Runner up, Student paper award: **Matthew Foradori**

First place, Student poster award: **Sean Higgins**

Runner up, Student poster award: **Carlos Valderrama**

Congratulations!!

A.A.S. ELECTIONS

We will be running an election this year for a Director, Secretary, and a special election for Treasurer. The Nominations Committee is identifying candidates for these important offices.

A ballot will be mailed to you in late April along with biographies of the candidates, and the minutes from the 2000 AAS Business Meeting.

Please take the few moments it takes to make your considered choices and send the ballot back! Every vote is important.

WHERE IS BOSCO'S MANUSCRIPT ?

I have always had a special affection for naturalists who persevere under extraordinary circumstances, especially those in which they might reasonably have thoughts for nothing but personal survival. My personal hero since boyhood has been Jean-Henri Fabre who just would not quit and ended up giving us the magnificent 10-volume *Souvenirs Entomologiques*. Earlier in these pages (no. 45, pp. 11-12) Bill Peck and I examined the legend of Kazimierz Petruszewicz's escape from the German army, ostensibly as a result of noticing an unusual spider. And somewhere in my files I have a wonderful paper by a Dutch biologist on a thomisid, based on observations made while a prisoner of war in Southeast Asia. To my annoyance, I can't lay my hands on this paper at the moment, but I recall that it includes illustrations based on field sketches made with a brush of the prisoner's own hair.

In his bibliography to 1939, Pierre Bonnet cites the following manuscript, which seems to be very much in the same vein:

Bosc, Louis Augustine Guillaume 1793. Araignées de la forêt de Montmorency, décrites et dessinées pendant que j'étais caché à Radegonde lors de la Terreur, Sept.. 1793. [Spiders of the Montmorency forest, described and figured while I was in hiding at Radegonde during the Terror, September 1793.] 107 pp.

From his annotations, it seems plain enough that the manuscript was seen by Bonnet, who goes on to say that it is in the Paris museum, along with another by Bosc on spiders of Carolina. However, Bonnet was writing almost 60 years ago, and Wilson Lourenço tells me that the manuscript is not readily to be found in the museum's archives.

I would be glad to hear from anyone who can tell me anything about this (presumably still unpublished) manuscript. And if you have a copy or transcript of it, I would especially value a copy of any opening or closing section in which Bosc describes the circumstances of his taxonomic studies. I make no claim that this is urgent, or even that I have any valid scientific reason for wanting to read it. It's just the sort of thing that has always tickled my fancy.

- **Christopher K. Starr**, Dep't of Life Sciences, University of the West Indies, St Augustine, Trinidad & Tobago
ckstarr99@hotmail.com

USED BOOK SALE TO BENEFIT THE A.A.S.

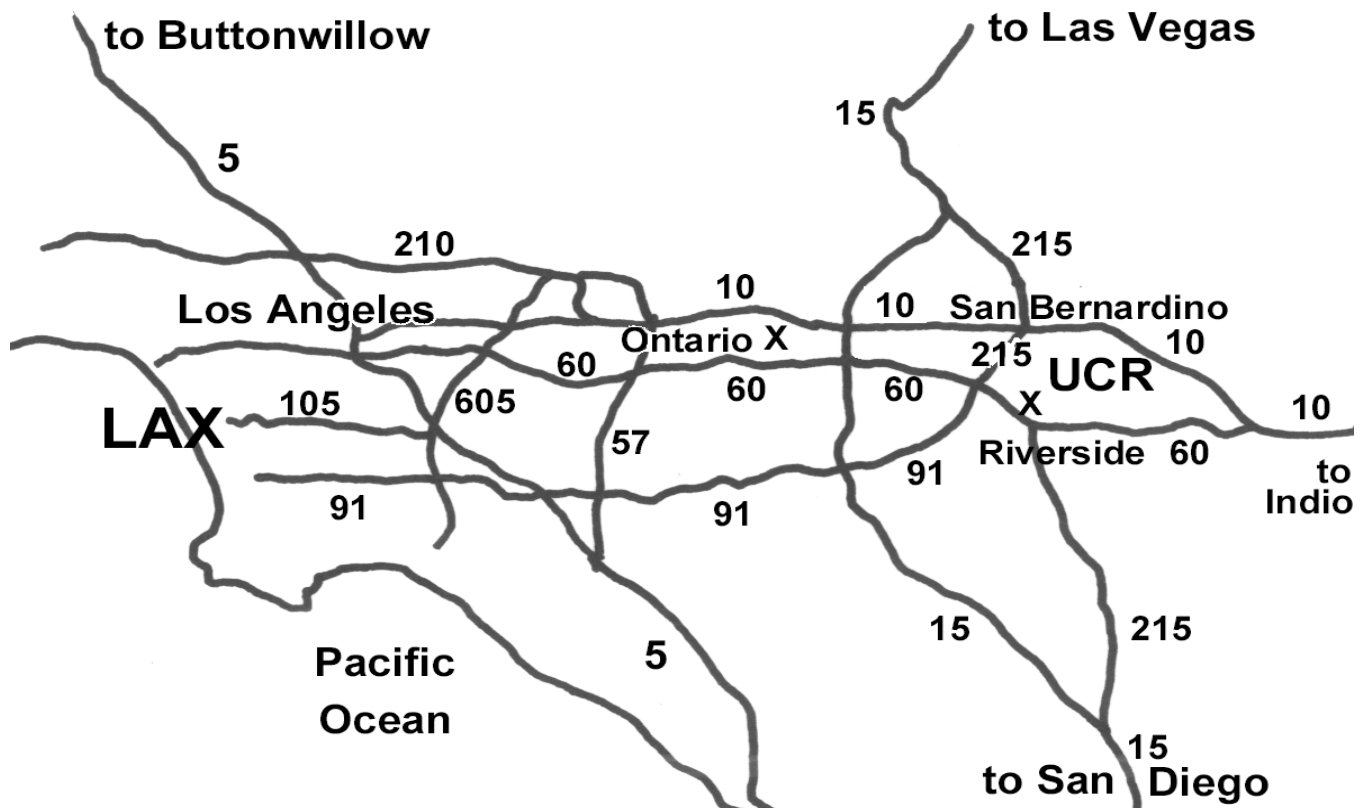
No shipping charge within the continental U.S.

B. J. Kaston 1978. How to Know the Spiders, 3rd Edition, very good condition —\$25 (barnesandnoble.com = \$36 new, plus shipping); 11 copies available

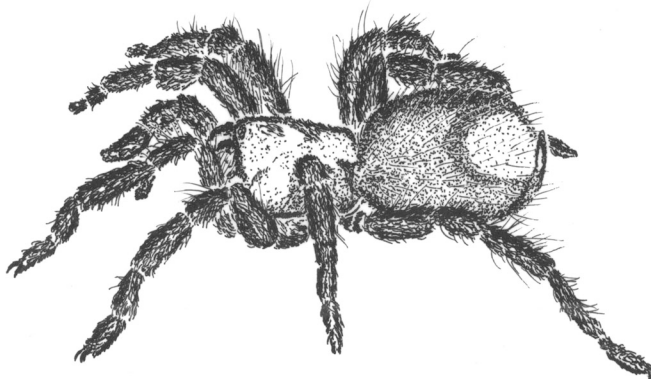
R. Foelix 1996. Biology of Spiders, 2nd Edition, excellent condition — \$30 (barnesandnoble.com = \$35 new, plus shipping); 9 copies available

Payment should be in the form of a check made out to: **American Arachnological Society.**

Send your order to: Jerome Rovner, 49 Ohio Ave, Athens, OH 45701-1916



Schematic of highways around Riverside, CA
 Much more detailed maps may be found at the AAS website



AAS 2002 Riverside

Pat Miller reminds us:

Back issues of many of the earlier volumes of the *Journal of Arachnology* are available. The cost is \$15.00 for each number (AAS will pay shipping costs). Write or email Pat Miller to find out which numbers are still available. Please be willing to send a check or money order for payment.

During the school year (August - May), Pat can be reached at: prmiller@nwcc.cc.ms.us; P.O. Box 5354, Northwest Mississippi Community College, Senatobia, MS 38668

In the summer, from May-Aug each year Pat can be reached at: pmiller@olemiss.edu; 956 Highway 7 N Abbeville, MS 38601

In The Next Issue ...

- Abstracts from AAS Meeting, Riverside, CA
- Results of AAS Election
- Info on the 2003 AAS Meeting, Denver, Colorado
- Submit items for Vol. 66 by 15 September, 2002

Join the A.A.S. !

Are you reading a borrowed copy of *American Arachnology*? Start enjoying the benefits of membership in the American Arachnological Society. Complete the following form and send with your dues, (calculated by table below), to the Membership Secretary (address below).

NAME _____

Address _____

City, State (or province), Postal code, Country _____

Indicate Membership Dues Enclosed:

Regular	\$ 40
Student	\$ 25
Institutional (USA)	\$ 125
Institutional (all other countries)	\$ 135

Snip or Photocopy & Save Time

Norman I. Platnick - Membership Secretary
 American Museum of Natural History
 Central Park West at 79th Street
 New York, New York 10024 USA

Members receive the *Journal of Arachnology* three, and the newsletter *American Arachnology* two times a year.

AMERICAN ARACHNOLOGY

The Newsletter of the American Arachnological Society

Number 65

April 2002

Journal Of Arachnology *ONLINE* !! (New Volumes!)

Our Society continues to enter the cyber-verse. The Journal of Arachnology has gone online thanks to enormous effort from Ken Prestwich. This is a trial session to determine demand for electronic availability of the Journal.

The electronic version of JOA Vols. 12, 18(3), 27, 28, & 29 may be accessed via the AAS website.

American Arachnological Society Website

<http://americanarachnology.org>

The website shows membership info, officers, announcements, minutes of meetings, newsletters, honorary members, a bulletin board, instructions to JOA authors, an electronic JOA index, graduate study, a photo gallery, and links to other arachnological sites, and **JOA OnLine** (Vols. 12, 18(3), 27 - 29; PDF files).

Detailed information regarding the 2002 AAS meeting in Riverside, CA is available at the website.

we all thank Ken Prestwich for his fine job building and maintaining the site, and Holy Cross for sponsorship.

JOURNAL OF ARACHNOLOGY ELECTRONIC INDEX

The electronic index for the Journal of Arachnology is available at:

<http://vassun.vassar.edu/~celt/suter/spiderform.html>

Note that the main search keywords are: **SCORPION, SPIDER, HARVESTMAN, MITE**

Any word or taxon that is in a title may be found with a search of the Index.

Thanks to Bob Suter for the implementation!!: **SUTER@VASSAR.EDU** [HTTP://FACULTY.VASSAR.EDU/~SUTER/SUTER.HTML](http://FACULTY.VASSAR.EDU/~SUTER/SUTER.HTML)

AMERICAN ARACHNOLOGY

Department of Zoology

Miami Univ.- Middletown

4200 E. Univ. Blvd.

Middletown, Ohio, 45042

Non-Profit Organization U.S. Postage PAID Miami University
--